





| IMAGEN | ESPECIFICACIONES | POTENCIA (WATTs) | BATERIA (LITIO) | PANEL SOLAR | DIMENSIONES | PESO NETO | ALTURA SUGERIDA DE MONTAJE | APLICACIONES |
|---|---|------------------|-----------------|-------------|-------------|-----------|----------------------------|---|
|  | <p>Item type : LAP-SL-L190101 Mono crystalline panel with patented MPPT controller Chip:Epistar Lumens:140lm/w Installation: Wall/Pole Material:ADC12 Aluminum (export to Germany standard) Working temperature:-20°-50° IP65 warranty: 3 years</p> | 40w | 6AH 6.4V | 15w 10v | 550*263*80 | 3,52 | 4-5m |  |
|  | <p>Item type : LAP-SL-L190102 Mono crystalline panel with patented MPPT controller battery built-in Chip:Epistar Lumens:140lm/w Installation: Wall/Pole Material:ADC12 Aluminum Working temperature:-20°-50° IP65 warranty: 3 years</p> | 30w | 15Ah/12v | 50w/18v | 550*263*80 | 12,8 | 6m | |
| | | 60w | 30Ah/12v | 80w/18v | 550*263*80 | 14,5 | 8-10m | |
| | | 80w | 40AH 12V | 100W 18V | 550*263*80 | 16,2 | 10-12m | |



Item type:LAP-SL-S190104A
 Mono crystalline panel
 with patented MPPT controller
 battery out-put under panel
 Chip:Epistar
 Lumens:140lm/w
 Installation: Wall/Pole
 Material:ADC12 Aluminum
 Working temperature:-20°-50°
 IP65
 warranty: 3 years

| | | | | | |
|------|----------|----------|------------|----|-----|
| 100w | 50AH 12V | 150W 18V | 550*263*80 | 17 | 12m |
|------|----------|----------|------------|----|-----|



Item type:LAP-AIO-190305
**Mono crystalline panel
 with patented MPPT controller**
 Chip:Epistar
 Lumens:150lm/w
 CRI>80
 beam angle:135°*75°
 Color temperature:6000K
 Materials:Die-casting aluminum
 Working temperature:-20°-50°
 IP65
 Installation method:pole/wall
 warranty: 3 years

| | | | | | |
|------|-------------|-----------|-------------|-----|------|
| 60W | 10AH / 6.4V | 15W / 10V | 650*204*130 | 5 | 4-5m |
| 90W | 12AH / 6.4V | 20W / 10V | 745*204*130 | 5,8 | 5-6m |
| 120W | 18AH / 6.4V | 25W / 10V | 900*204*130 | 6,3 | 6-8m |

CE certified



Item type:LAP-AIO-180402
**Mono crystalline panel
 with patented MPPT controller**
 Chip:philips
 Lumens:150lm/w
 CRI>80
 beam angle:135°*75°
 Color temperature:6000K
 Materials:Die-casting aluminum
 Working temperature:-20°-50°
 IP65
 Installation method:pole/wall
 Warranty:3 year

| | | | | | |
|-------------|-----------|----------|-------------|----|--------|
| 60W(30w*4) | 40AH 7.4V | 75W 12V | 955*426*43 | 15 | 8-10m |
| 80W(30w*4) | 40AH 12V | 90W 18V | 1010*528*43 | 18 | 10-12m |
| 100w(30w*5) | 50AH 12V | 105W 18V | 1240*528*43 | 23 | 12m |

CE certified





Item type:LAP-181105
Mono crystalline panel
with patented MPPT controller
Radar sensor
 Chip:Epistar
 with lithium battery
 Lumens lm:100lm/w
 CRI:>70
 Beam angle:120°
 Color temperature:3000-6000K
 Materials:ABS
 Working temperature:-20°-50°
 IP65
 Installation method:pole/wall
 Warranty:3 year

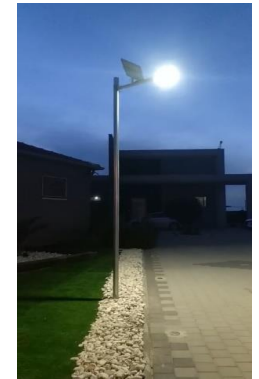
| | | | | | |
|-----|-----------|--------|------------|------|----|
| 20w | 6Ah/3.2V | 7W/6V | 360*185*55 | 1,11 | 3m |
| 40w | 10Ah/3.2V | 10W/6V | 465*190*55 | 1,6 | 4m |
| 60w | 12AH/3.2V | 14W/6V | 600*195*55 | 2,14 | 5m |



Item type:LAP-GMX-S50
Mono crystalline panel
with patented MPPT controller
 Chip:Epistar
 with lithium battery
 full sets with holder
 110lm/w
 Beam angle: 120°*70°
 6-8 hours full charge
 12 hours lights at night
 gray/white available
 Installation method:pole/wall
 IP66
 warranty: 3 years

| | | | | | |
|-----|-----------|---------|--|------|------|
| 20W | 5Ah/6.4V | 15W/10V | | 4,5 | 3-4m |
| 30W | 6Ah/6.4V | 18W/10V | | 4,85 | 4-5m |
| 50W | 12Ah/6.4V | 25W/10V | | 6,6 | 5-6m |

CE SAA C-Tick FCC EN62471 LM-79
 IP66 IK10



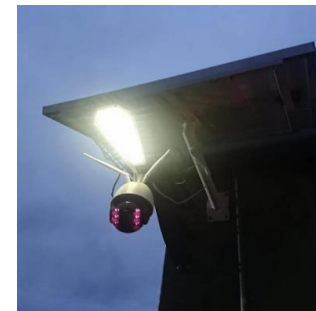
Item type:BS-KQ60B
with patented MPPT controller WIFI/Cable
 Voltage:12V
 LED source:Epistar
 Material:Alluminum
 IP Rates: IP65
 Lumens: 3000lm
 Charge time:4-5 hours
 Camera working hour:24 hours
 Lifespan:50,000hours

| | | | | | |
|---------------|----------|----------|---------|----|--|
| 60*1W | 30AH/12V | 60W/18V | | | |
| 4G | 60*1W | 30AH/12V | 60W/18V | 13 | |
| 4G/WIFI/Cable | 60*1W | 30AH/12V | 60W/18V | | |





Item type:BS-SR02
with patented MPPT controller WIFI/Cable 60*1W 30AH/12V 60W/18V
 Voltage:12V
 LED source:Epistar
 Material:Alluminum
 IP Rates: IP65 4G 60*1W 30AH/12V 60W/18V 12
 Lumens: 3000lm
 Charge time:4-5 hours
 Camera working hour:24 hours 4G/WIFI/Cable 60*1W 30AH/12V 60W/18V
 Lifespan:50,000hours



Instalacion en Proyecto con luminarias de 30W a 8 metros de altura



MPPT SOLAR CHARGE CONTROLLER

Bosun patented MPPT solar charge controller, super charging function although rainy day



Advantage 1:

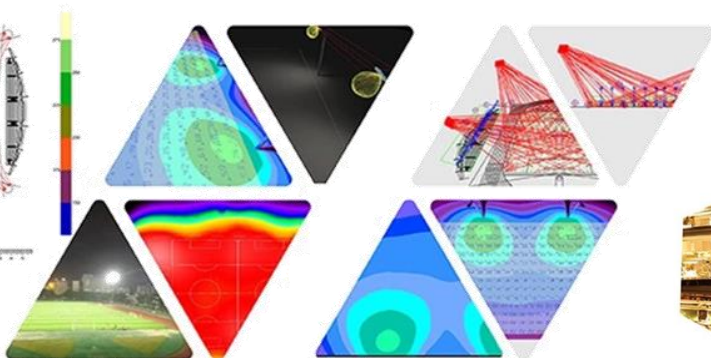
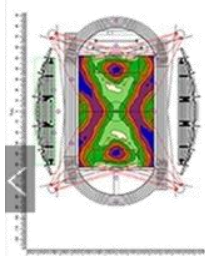
365 days, lights up every night, achieve "All-weather lighting"

Advantage 2:

MPPT controller, more cost-effective.

Advantage 3:

Dimmer automatically, no need to control brightness by human and it can avoid security risk



► IES testmachine

Full-automatic aging machine

EMC shielding test room



► Constant temperature aging room

► Lighting surge tester

► Integrating sphere

- 1: IES optical testing system
- 2: Testing system of LED life
- 3: EMC testing system
- 4: Lightning surge generator
- 5: Integrating sphere

These test systems not only protect the quality of our products, but also fully serve the various projects.